

Bumberrah Cemetery Trust

Bumberrah Cemetery is located on the corner of Harmans Road and Wyatt Road, Johnsonville. Gazetted in 1885, it traditionally serves the Parish of Bumberrah, which encompasses Nicholson, Nungurner, Johnsonville, Swan Reach and Metung, plus adjoining locations such as Mossiface, Tambo Upper and Kalimna West. The total area is 10 acres, with four acres fenced for current Cemetery use.

At present, the public are able to reserve grave sites by contacting the Secretary and paying a fee. Sites are sold at a comparable cost to other cemeteries in the area. Sites are held in perpetuity.

Bumberrah Cemetery, in its tranquil, rural setting, retains its traditional features, as well as a more modern lawn section, a small brick ashes interment wall and a memorial wall. A memorial rose garden is situated just inside the front boundary fence. It also offers visitor facilities, including a gazebo, toilet block and seating in various locations.

Monumental Sections



The monumental section of Bumberrah Cemetery is divided into five sections: Church of England, Presbyterian, Roman Catholic, Methodist, and the new non-denominational section at the southern end of the Cemetery. The oldest headstone is marked 1882.

A number of graves in the monumental section are unmarked, with the result that areas of this older section cannot be used, with newer monumental burials taking place in the new section:

Rose Gardens



There are two rose gardens set within wooden borders just inside the north boundary fence. These can be used for interment of ashes, or memorial plaques can also be placed in this section.

Lawn Section



The original lawn section at the front of the Cemetery runs east-west. A new lawn section established in 2018, running north-south, is located midway in the grounds on the east side beside an access carriageway. A standardised bronze plaque is used (see over)

Niche Wall



A small brick niche wall is situated in the front north-west corner of the Cemetery for the interment of ashes. It is hoped to have a new more modern niche wall available by the end of 2022.

Memorial Wall



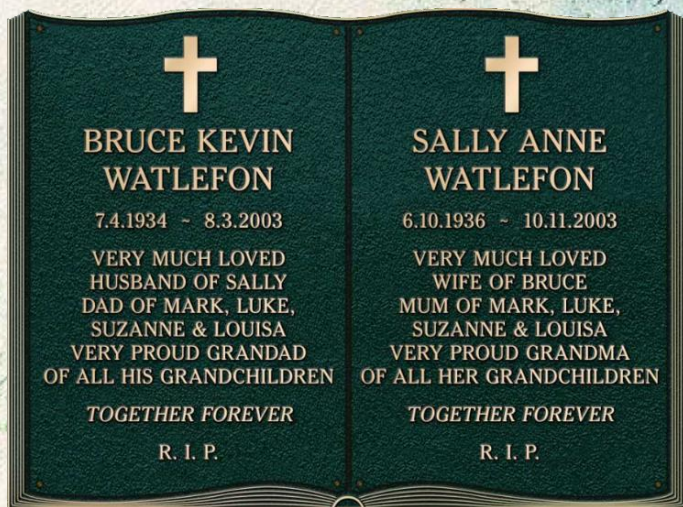
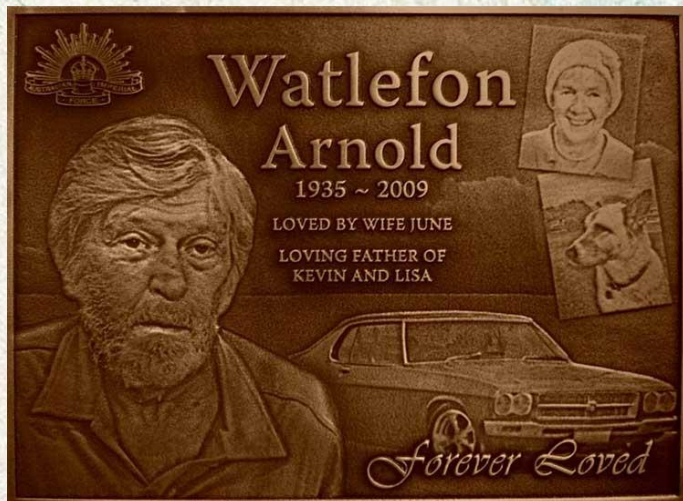
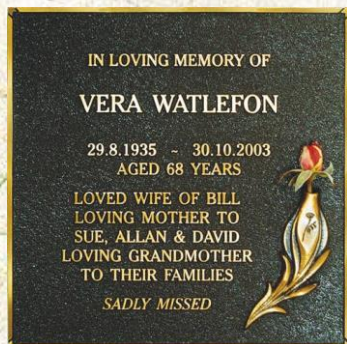
A memorial wall is situated close to the niche wall and is a place to put plaques acknowledging loved ones. The memorial wall includes names of some occupants of unknown grave sites in the Cemetery and others whose ashes may have been scattered elsewhere.

Why choose a plaque

A bronze plaque is a classic and enduring way for you and your descendants to honour your loved ones if you have chosen a cremation or lawn burial. Bumberrah Cemetery Trust has a large range of environments in which you can create your memorial, from a traditional wall niche (or columbarium) to contemporary garden settings with different botanical themes. You can choose a memorial environment and plaque that best reflects how you want to commemorate your loved ones.

Plaques are available in small, medium and large sizes, with a natural or coloured finish. Most can be customised with motifs of your choice. The size of the plaque is dependent on the memorial you choose and your memorial location. A helpful Client Services Consultant will show you the various options during your appointment.

Examples



Rose Garden plaques - 150 x 150mm

Niche Wall / Wall of Remembrance plaques - 190 x 190mm

Lawn Grave plaques - 380 x 280mm

Bumberrah Cemetery Trust

We're here to help

Our caring Trust team is ready to answer all your questions so that you can make an informed choice matching your requirements. Please feel free to phone or email if there is any additional information that we may provide to assist you

Phone: 0417 241 562
Email: bumbcem@bigpond.com
Web: www.bumberrahcemetery.com.au
Postal address: P.O. Box 1967, Bairnsdale, Vic. 3875

Local Funeral Directors

Stephen Baggs Funeral Directors
613 Main Street
Bairnsdale, Vic. 3875

Phone: 03 5153 2150
Email: office@stephenbaggs.com.au
Website: www.stephenbaggs.com.au

Peter Murray Funerals
30 Victoria Street
Bairnsdale, Vic. 3875

Phone: 03 5152 4596
Email: info@petermurrayfunerals.com.au
Website: www.petermurrayfunerals.com.au